



Create an
entry level
Yumi
and/or a
shooting
simulator



A cheap
“Yumistick”



Necessary items

Flexible rod

- This one is a chimney sweep
- Various diameter according to manufacturer
- Length: 5-6cm longer than the PVC tube



PVC tube

- For electricity or water
- Internal diameter greater than the external one of the flexible rod
- Length: 2 m - to be adapted to the morphology of the users and the characteristics of the materials

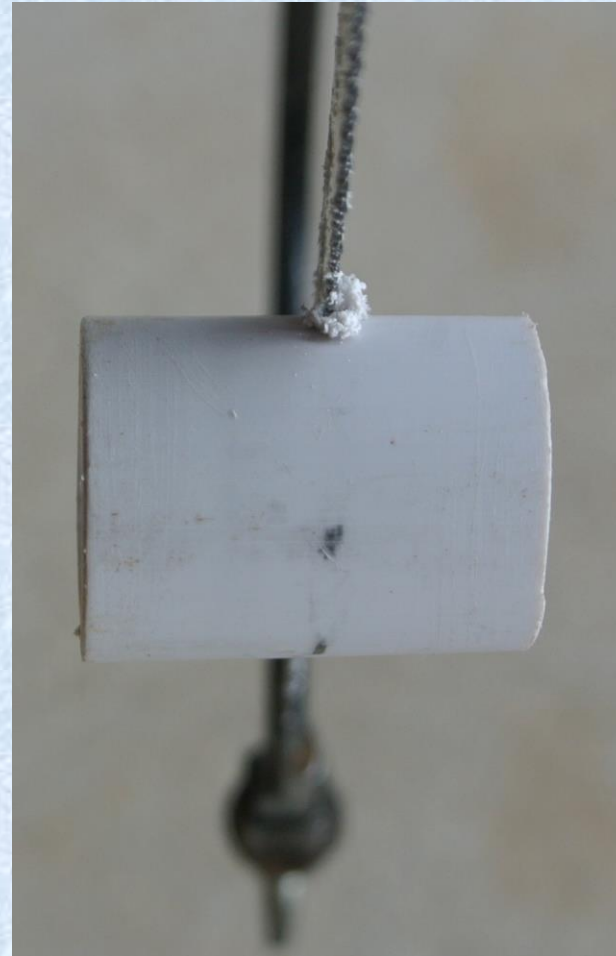


Material cutting

The approximately 2m long PVC tube



Remove the sleeve with a saw



Then cut it in half

Remove this
shoulder



by adjusting the
desired length



A little finishing

Of all PVC ends



**Option:
Surfaces
to paste**





OPTIONAL: Reinforcement of both ends

Bonding with suitable glue



Chamfer protecting the rope



Nigiri / Kyûha (bow handle) marking

Bottom of tube



Top of tube

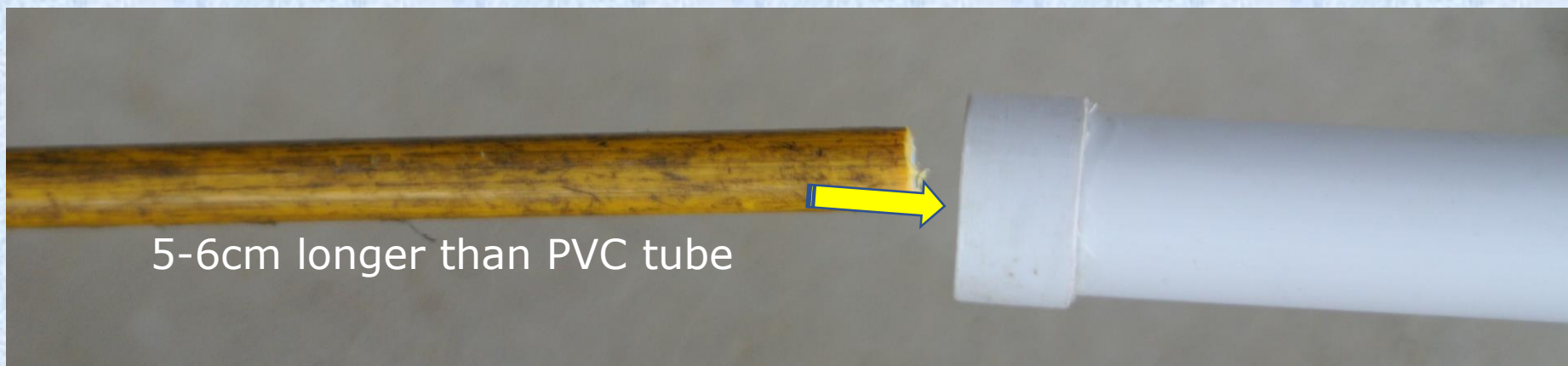


Preparation & Installation of the flexible rod

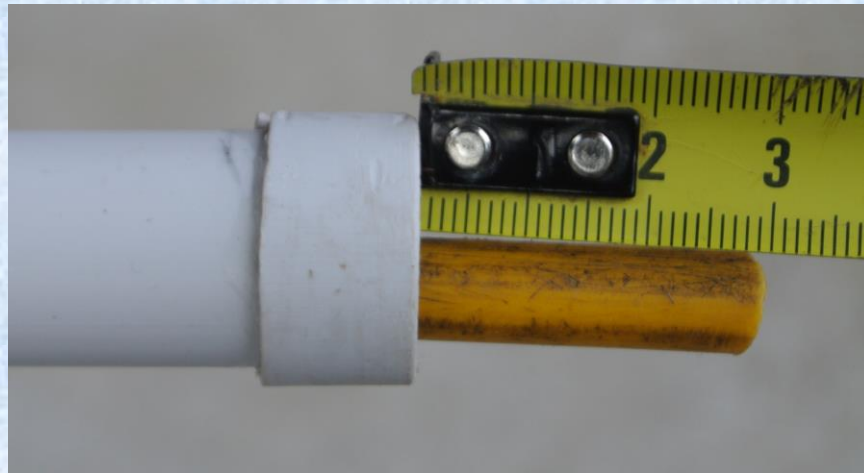
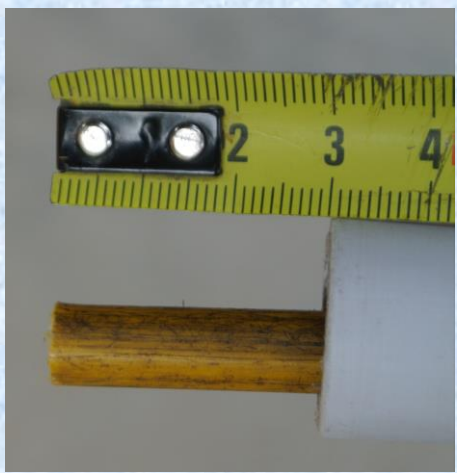
This one is used in sweeping. Available in various diameters, lengths ...

Insert it into the plastic tube

Possible without this rod, but very weak bow and the tube keeps the curvature



Cut the rod for a protrusion of 2.5 to 3 cm maximum at each end



A little silicone to hold it in place.
Test step





Tsuru (string) Preparation & Installation

Low elasticity - Diameter = 0.3 mm

Burn the ends if necessary



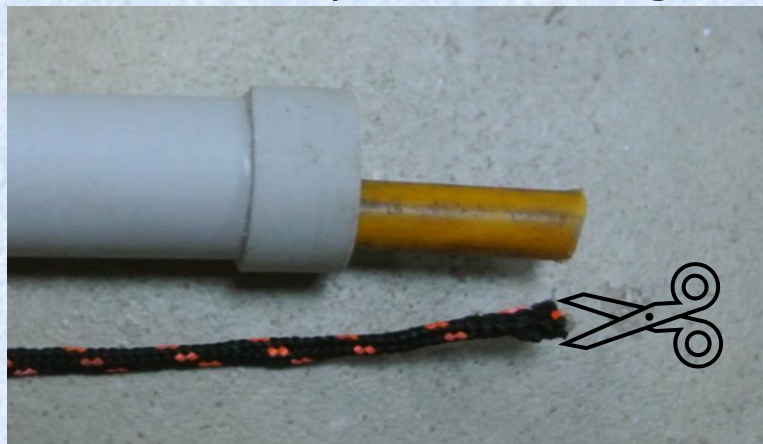
Make a small loop to surround the rod



Install this loop on one end



Cut the rope to this length



However, its length depends on its stretch / elasticity

Make the other loop





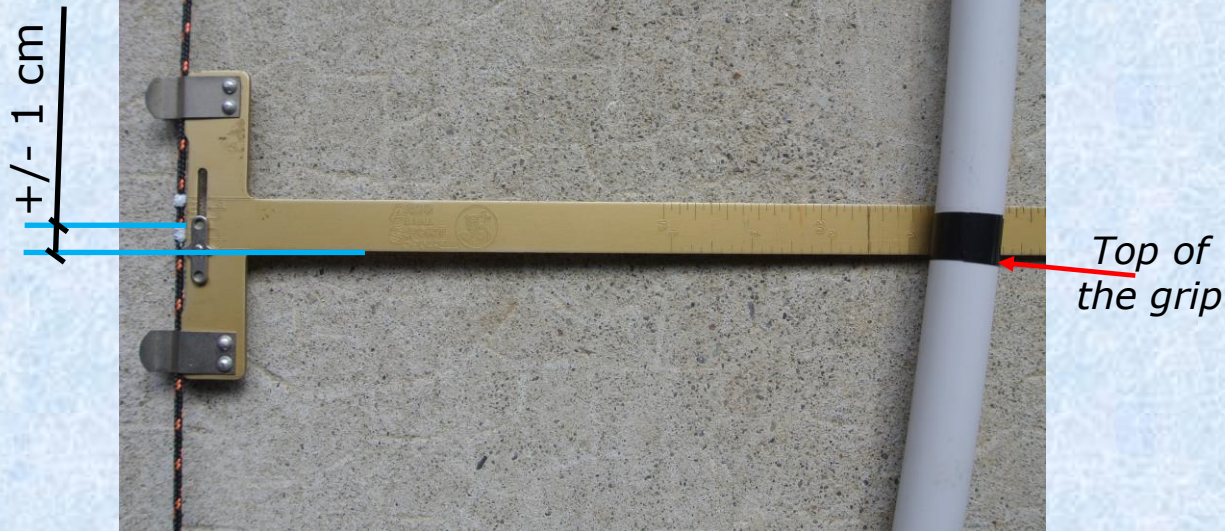
Tsuru (string) Preparation & Installation

Bracing / Stringing

Kyuha = 24 to 25 cm in the MIDDLE of the bow



Optional: Make nocking point(s)





Variation of bow weight

Some examples



**Ø 2cm plastic tube
with a flexible rod**

**Ø 1,5cm + Ø 2cm PVC tubes
with a flexible rod**

**Ø 2cm PVC tube
with 2 flexible rods**

**Ø 2cm + Ø 2,5cm PVC tubes
with 2 flexible rods**

Note:
More tubes &/or flexibles
becomes "too" heavy



Multi-use at low cost, anywhere

For: Discovery stand - Entry level - Very young kids -
Technical developments - Practice at home - ... / ...



**Without glove, arrow
and target**



**Without arrow
and target**



**In real situation
on Makiwara**

But always



with pleasure!



Hope you find this making guide helpful!

Thank you for your suggestions for improvement, questions, comments ...

Pascal COLMAIRE

Kyudo Teacher since 1990

2291 route du mont César

Hameau de Creusaz

74500 BERNEX

France

Tel.: +33 (0)6 28 31 32 70 *on WhatsApp, Viber, WeChat...*

contact@pascal-colmaire.org

Website: <http://pascal-colmaire.org/>