



Create your simulator



Double Elastic string or Gomu-tsuru



Necessary items



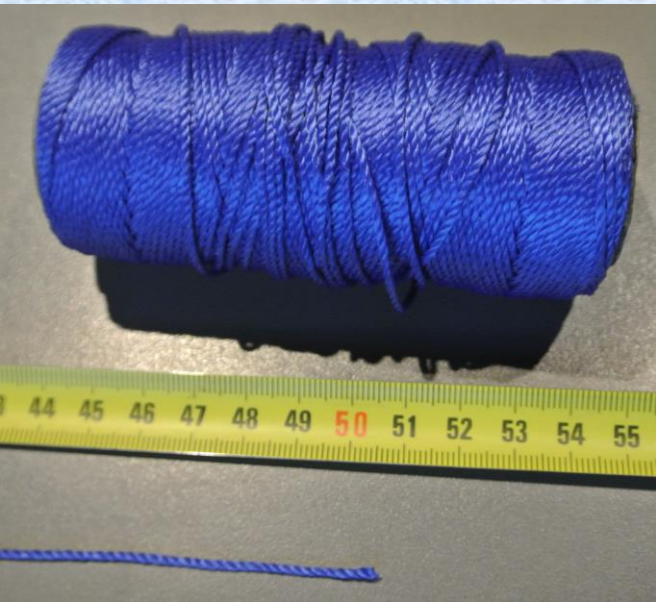
Tools

- Ciseaux ou cutter
- Lighter or matches
- + *Yumi*



Material cutting

1.8 m of not / little elastic string



50 cm: high section
Could be thinner



1 m: central section
 \varnothing max = 3 mm
to possibly nock an arrow

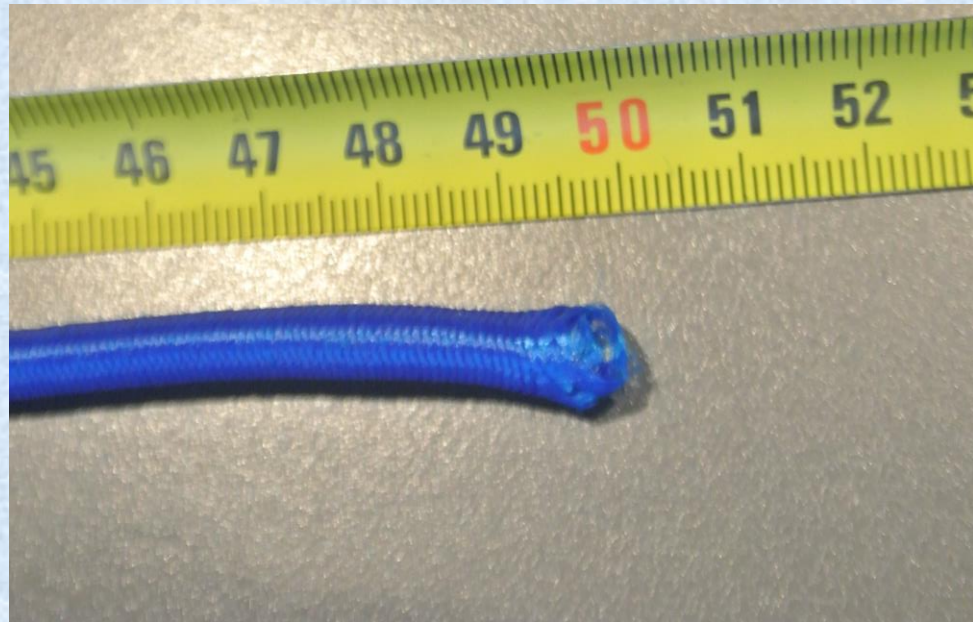


30 cm: low portion
Could be thinner



Material cutting

90 cm of elastic



50 cm high section

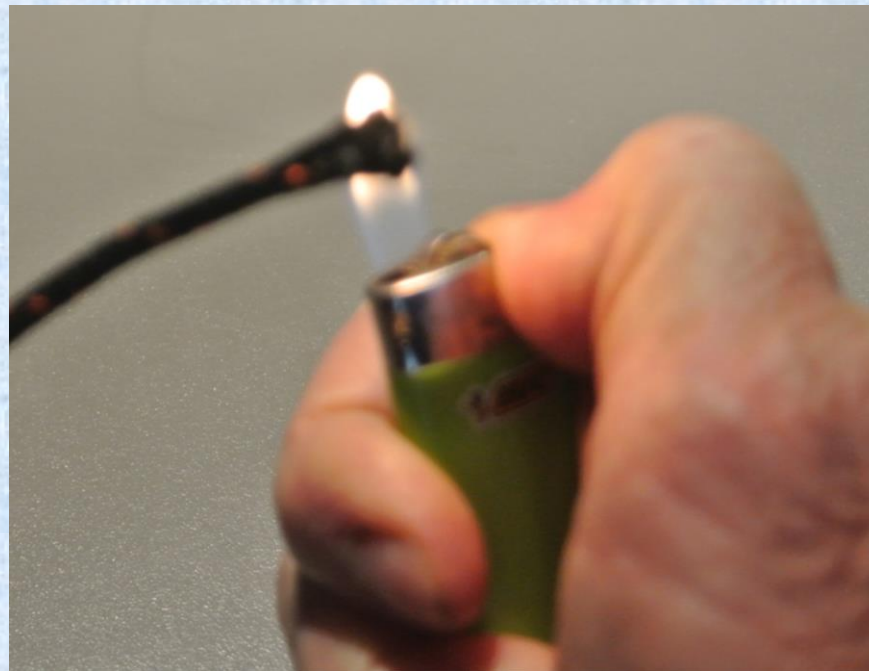
Exemple: sandow of 6 mm



40 cm low section



A little finishing

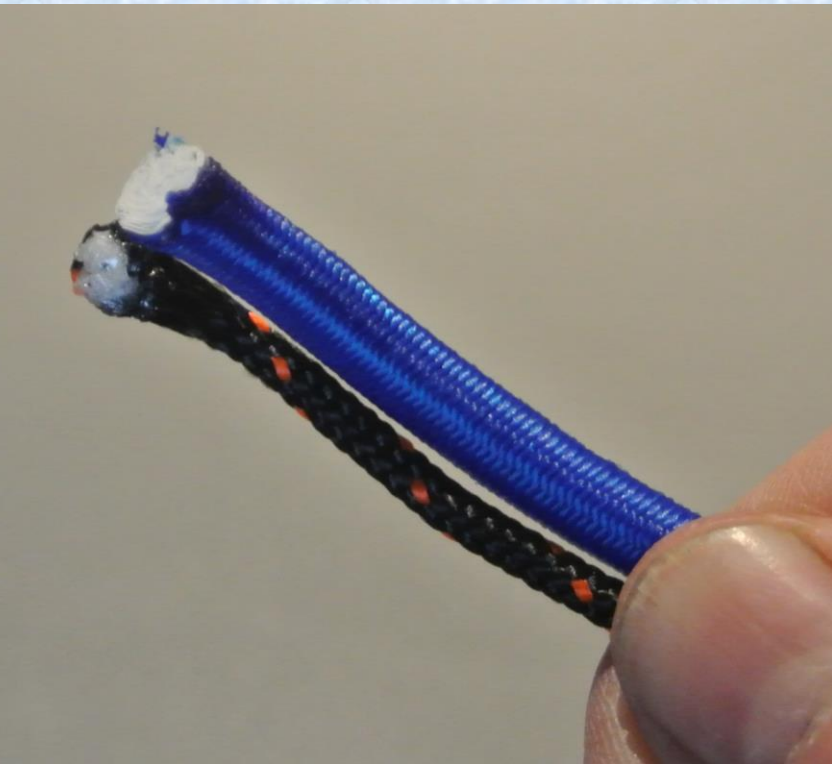




Assembly start

Different orders possible, here:

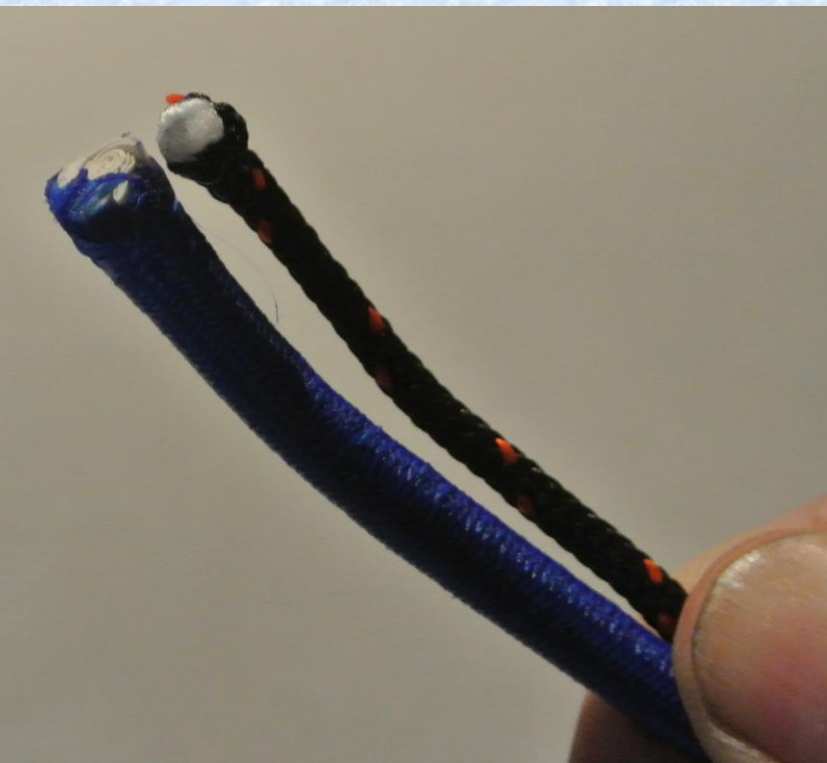
Central cord (1m / Ø max = 3mm) with upper elastic section (50cm)





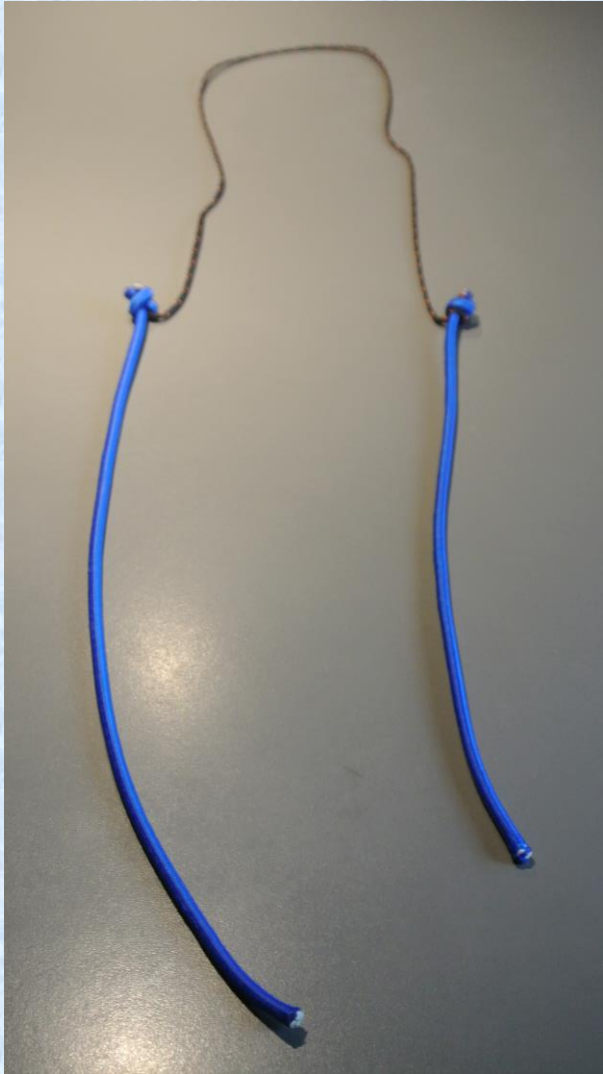
Assembly continuation

Central cord (1m / Ø max = 3mm) with lower elastic section (40cm)

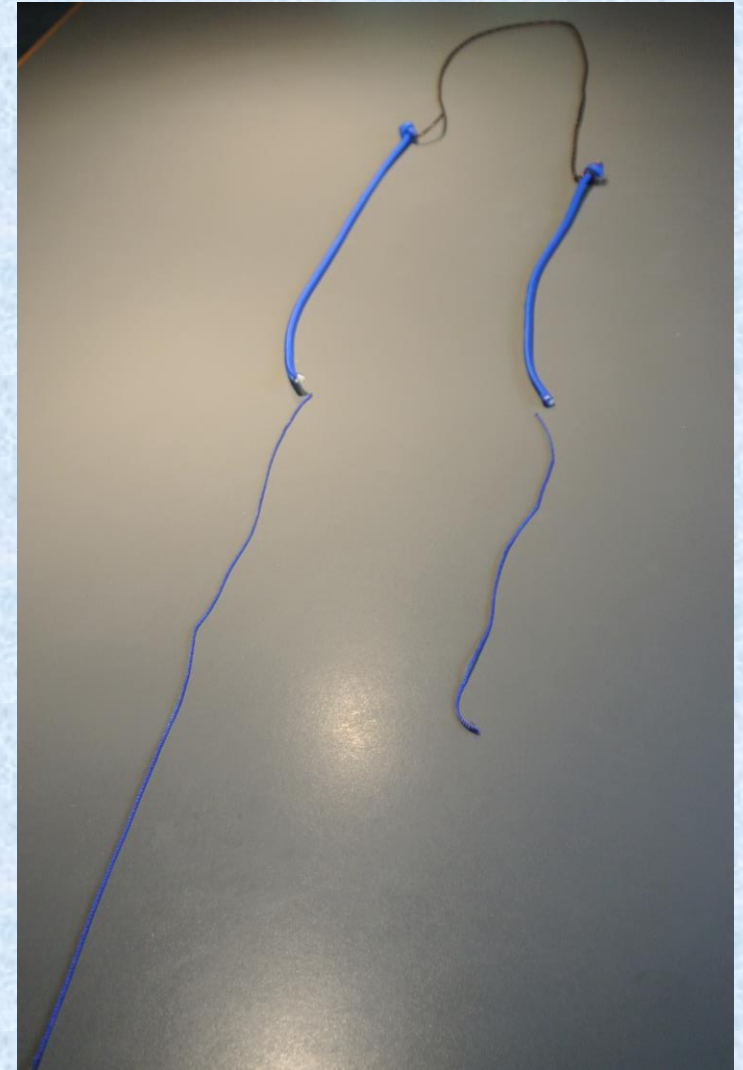
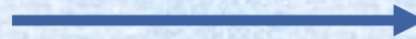




Central section built



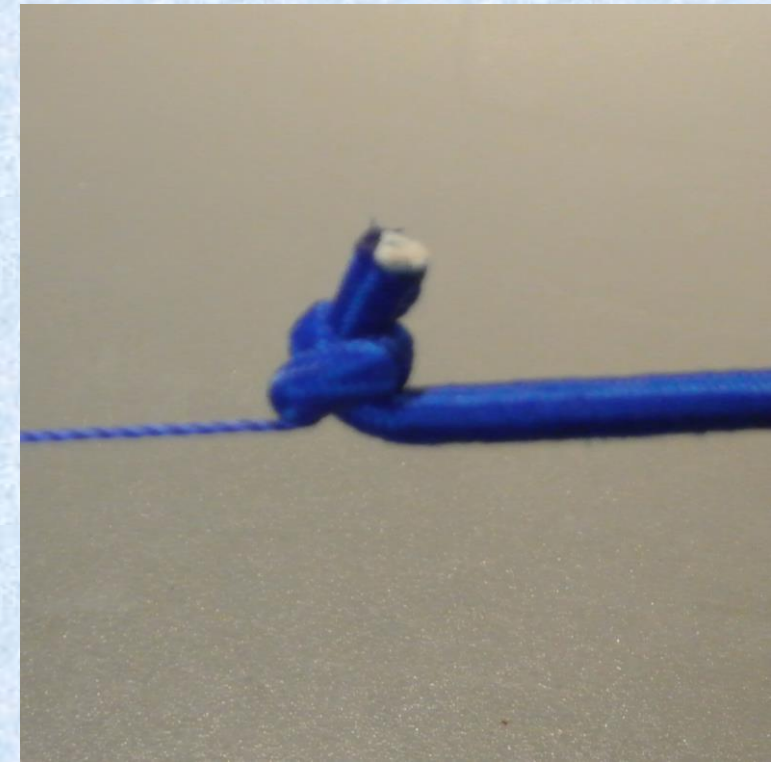
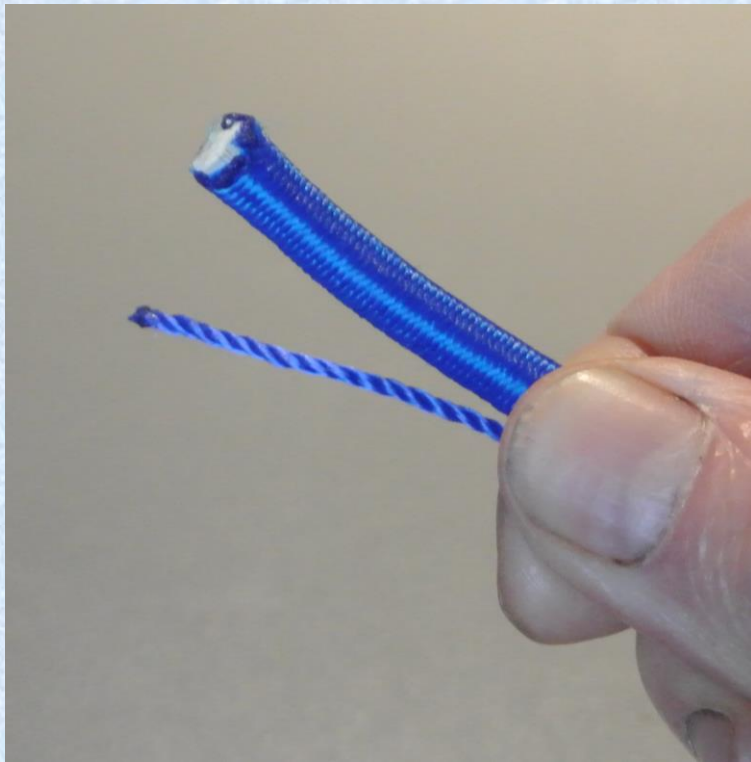
Still to add
the upper
and lower
sections





Assembly continuation

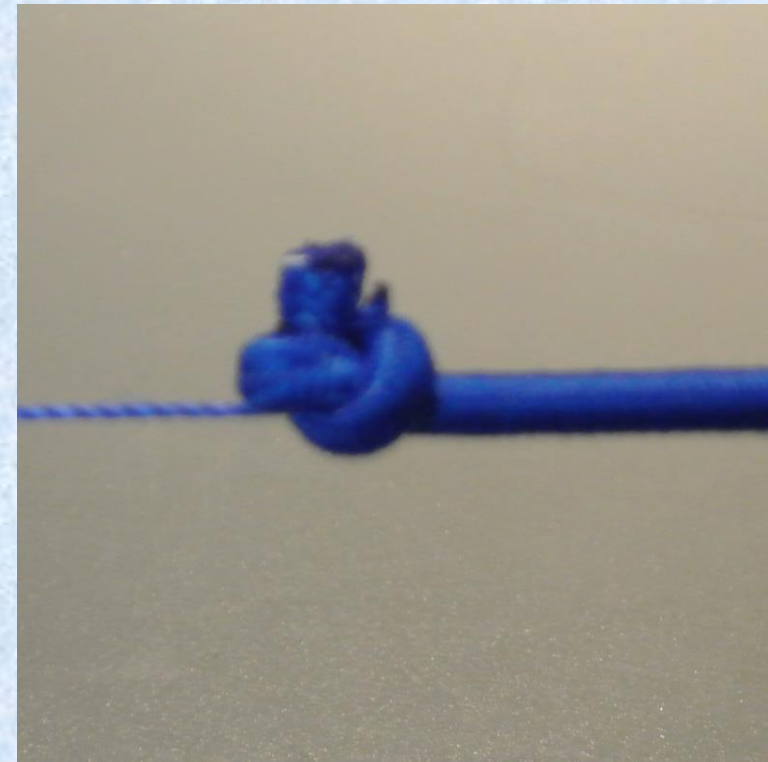
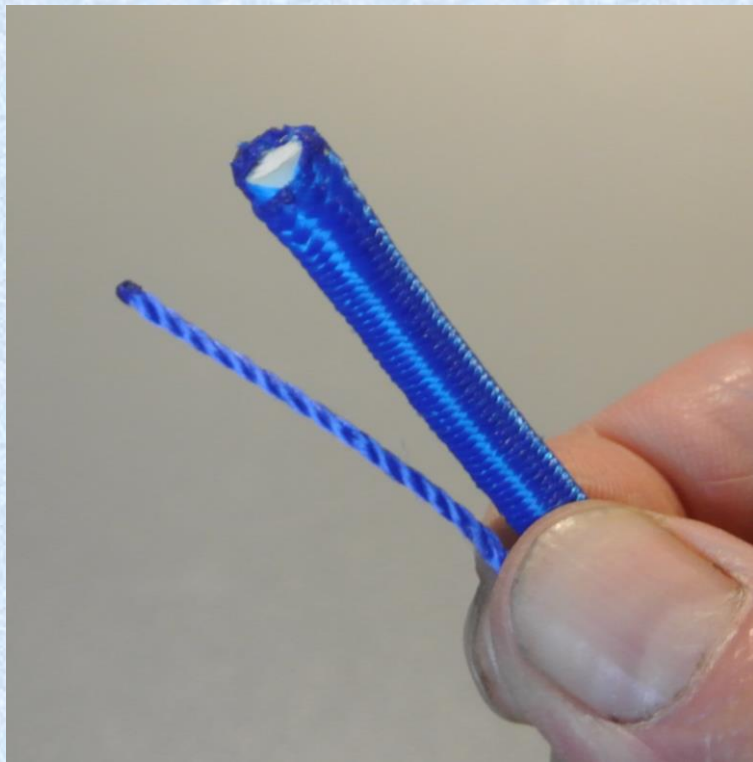
High elastic section (50cm) with high string section (50 cm)





Assembly continuation

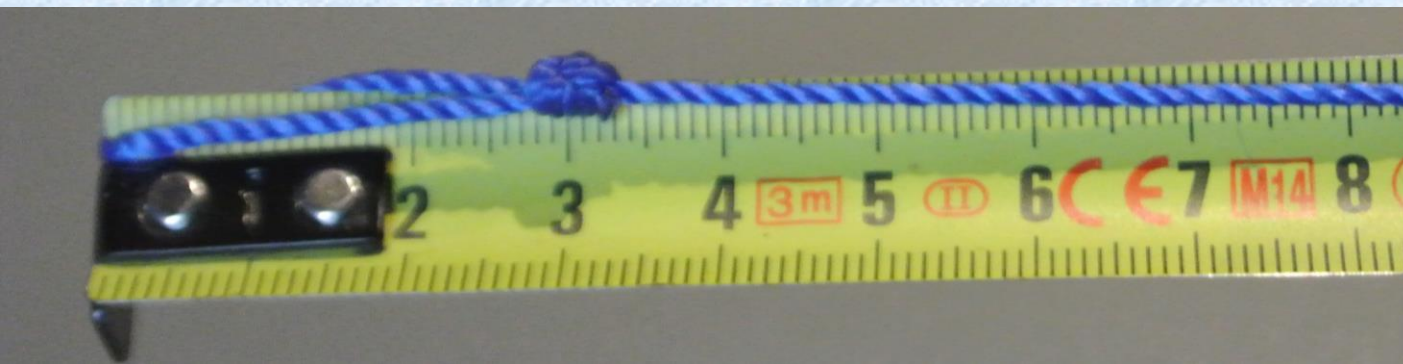
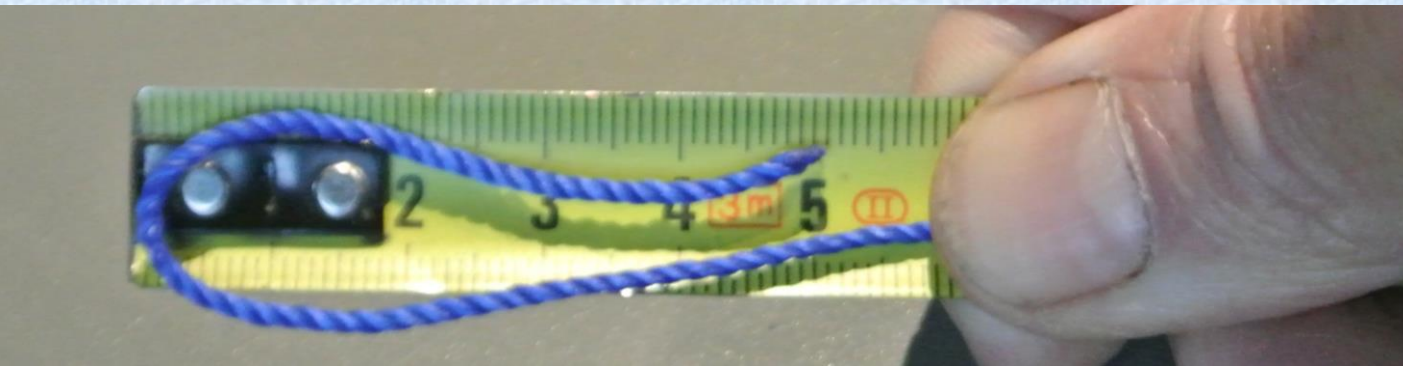
Low elastic section (40cm) with bottom string (30 cm)





Low finish

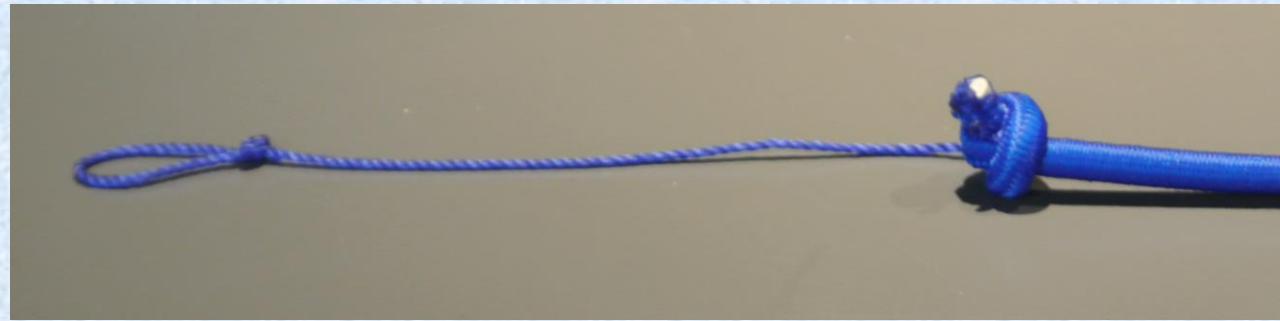
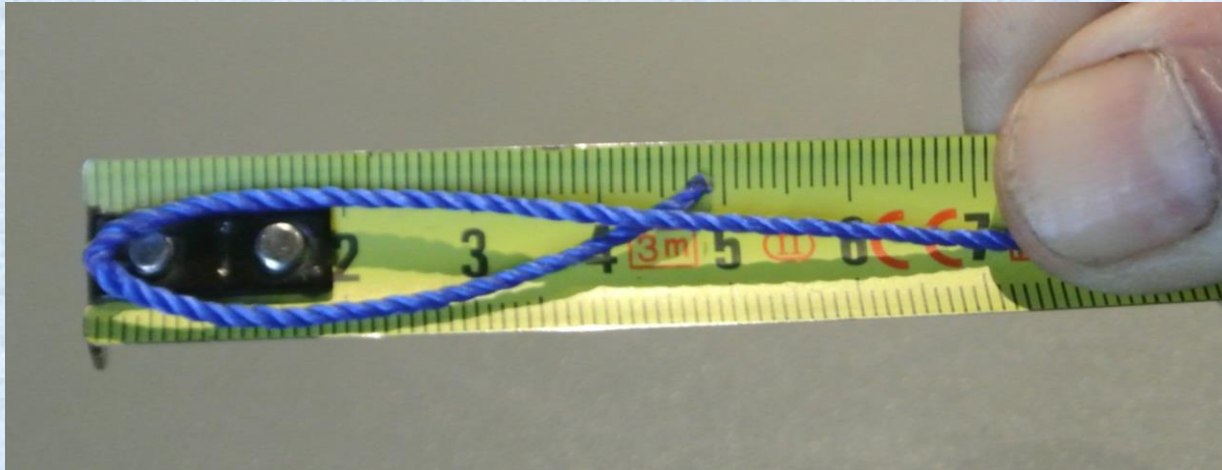
Allow about 10 cm of (thin) string for the loop that will go on Motohazu



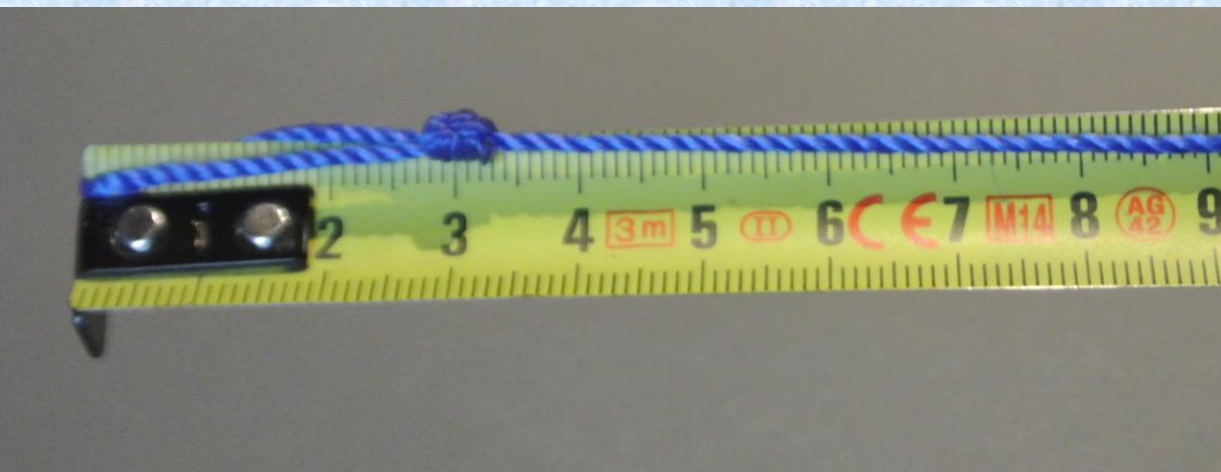


Top finish for Urahazu

Can be identical to the bottom (a single loop) or make two (or 3) for:
either to suit different bow lengths, or to vary the Gomu-tsuru tension a little



↑ or ↓





Low setting

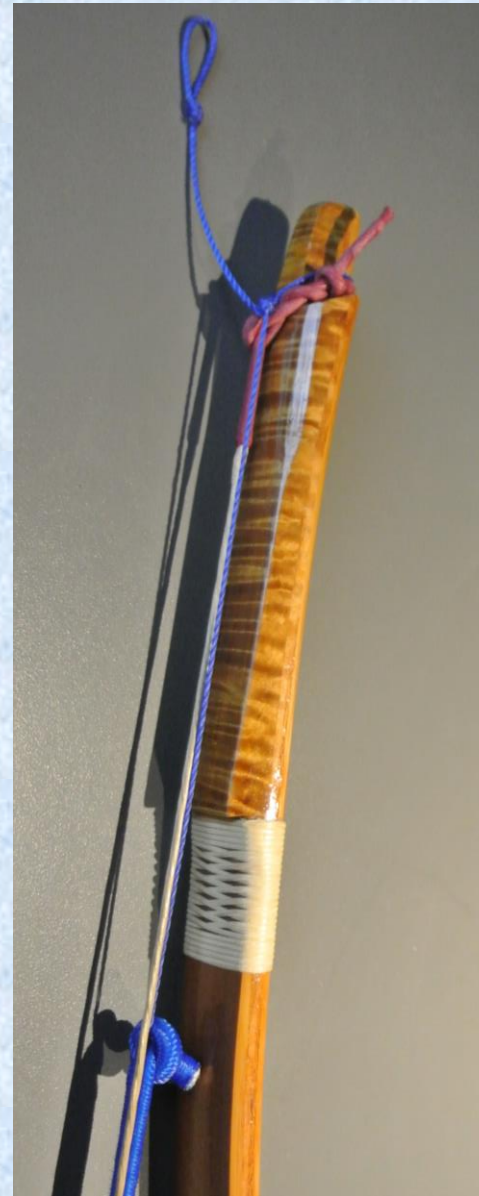
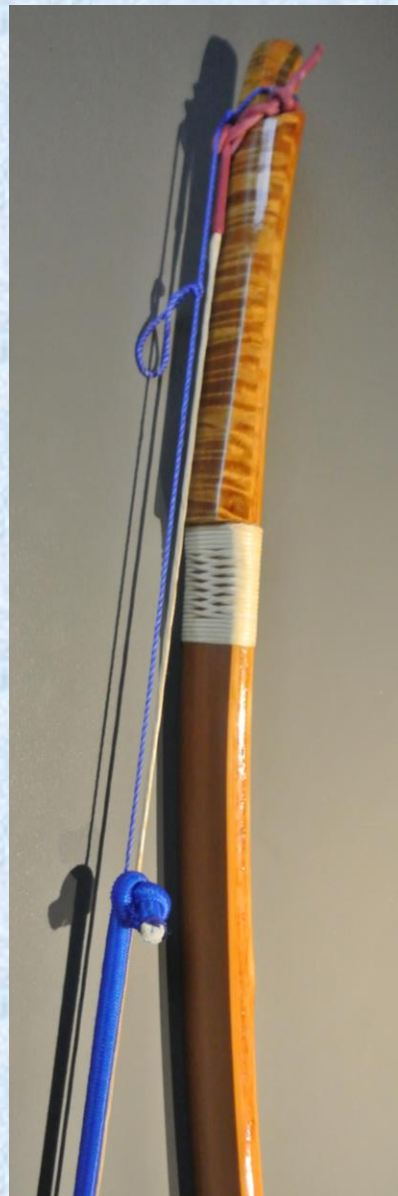
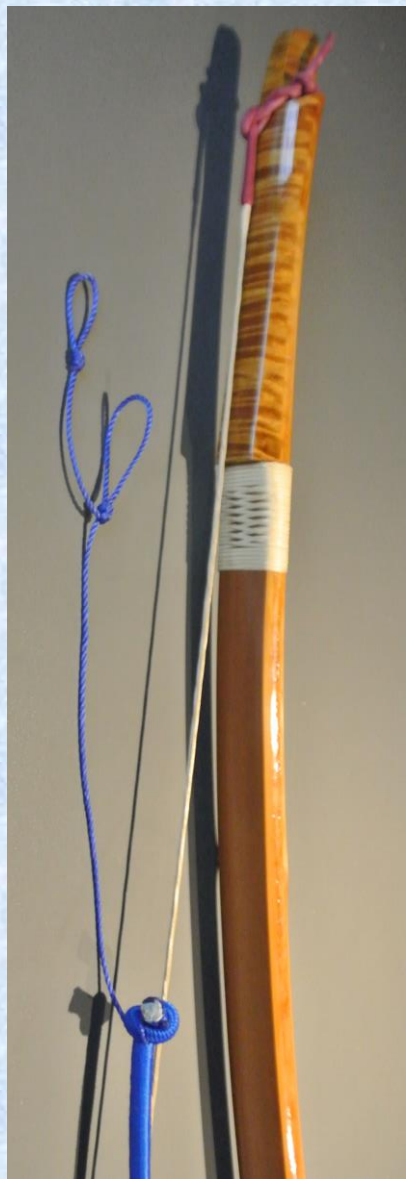


On stringed bow





Top setting





Ready to use

Dry fire





Ready to use

And even with arrow, *which will not go far and will hardly sink*





Educational uses

When a reduction in effort is desired

Learning stage between Gomu-yumi and (weak) bow, because you are handling a (usual) Yumi

Varied simulation compared to Gomu-yumi alone

When the risk of releasing empty is possible (and to be avoided!)

Facilitates the manipulations of the practitioner by the teacher

For various skills: Hikiwake, Shoulders, Kai (expansion), Hanare, ..

Increases the safety of the beginner and the equipment

...

Hope you find this teaching aid helpful!

Thank you for your suggestions for
improvement, questions, comments ...

Pascal COLMAIRE
Kyudo Teacher since 1990
2291 route du mont César
Hameau de Creusaz
74500 BERNEX
France

Tel.: +33 (0)6 28 31 32 70 *on WhatsApp, Viber, WeChat...*

contact@pascal-colmaire.org

Website: <http://pascal-colmaire.org/>